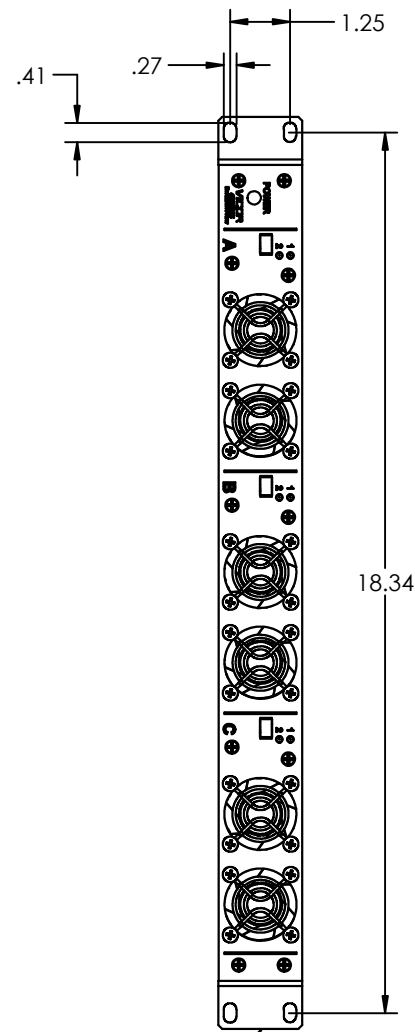
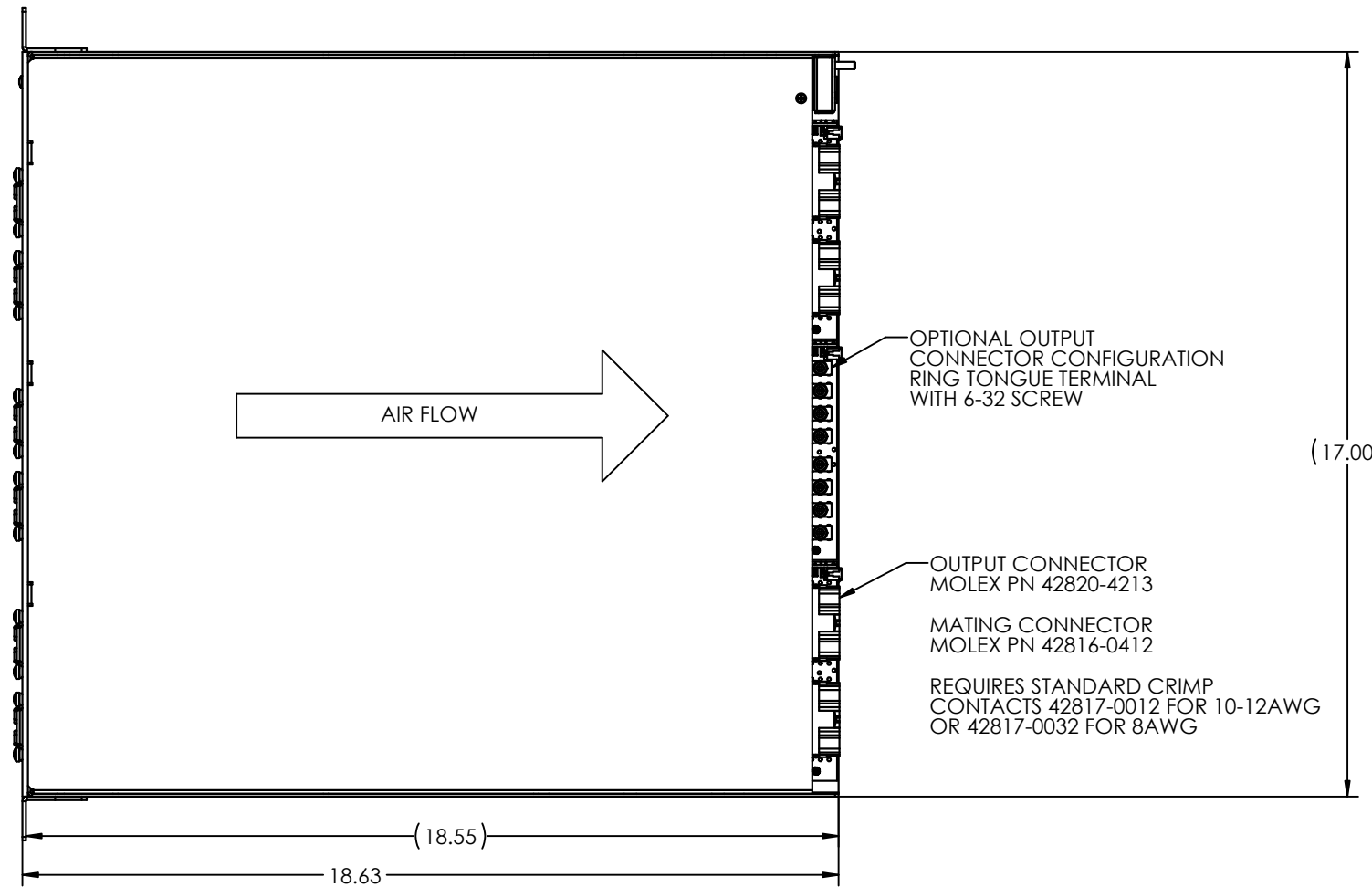


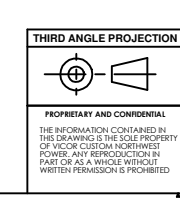
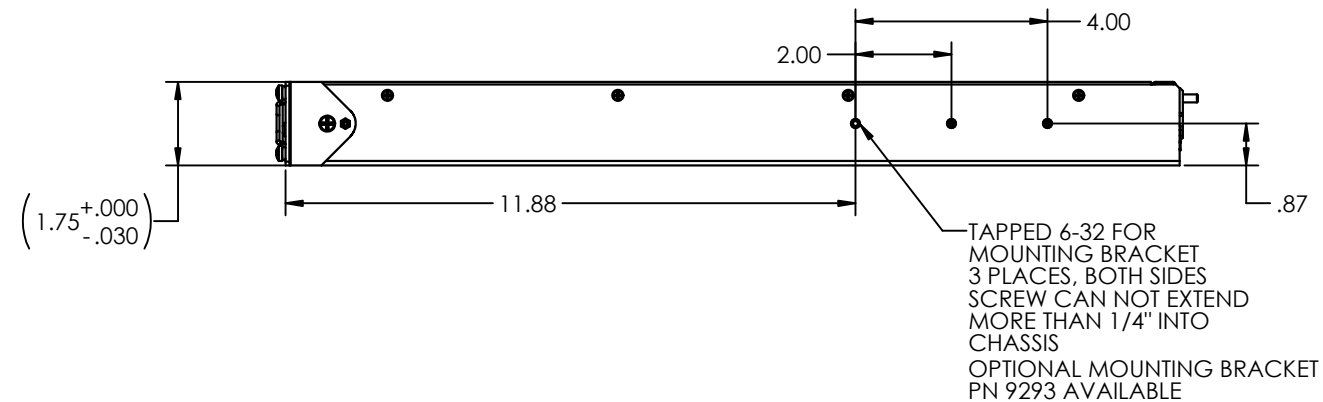
| REVISIONS | | |
|-----------|------|-------------------------------|
| REV. | ZONE | DESCRIPTION |
| B | | UPDATED CONNECTOR INFORMATION |
| | | DATE |
| | | 07-18-2014 |



OPTIONAL FRONT MOUNTING BRACKET FOR 19" RACK



INPUT CONNECTOR
POSITRONICS
PN PLB3W3M4BN0A1/AA
MATING CONNECTOR
PN PLB3W3F7100A1/AA



| | | | |
|---|---------|------|----------|
| UNLESS OTHERWISE SPECIFIED: | | NAME | DATE |
| DIMENSIONS ARE IN INCHES | | K.M. | 08-23-10 |
| TOLERANCES: | | | |
| FRACTIONAL: $\frac{1}{32}$ | | | |
| ANGULAR: $\pm 9^\circ$ | | | |
| TWO PLACE DECIMAL: $\pm .02$ | | | |
| THREE PLACE DECIMAL: $\pm .005$ | | | |
| MATERIAL: | | | |
| INTERPRET GEOMETRIC TOLERANCING PER: ANSI Y14.5 | | | |
| COMMENTS: | | | |
| NEXT ASSY | USED ON | | |
| APPLICATION | | | |

VICOR Custom
Northwest Power, Inc.

TITLE:
OUTLINE DRAWING

SIZE DWG. NO. REV
D 9669 B

SCALE: 1:2 WEIGHT: SHEET 1 OF 1

9669 Rev B